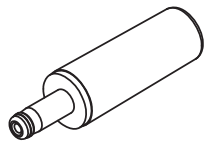
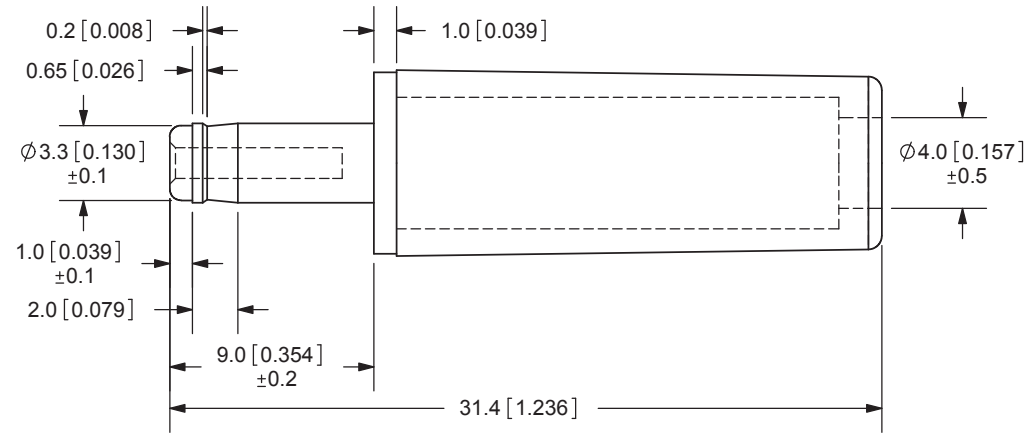
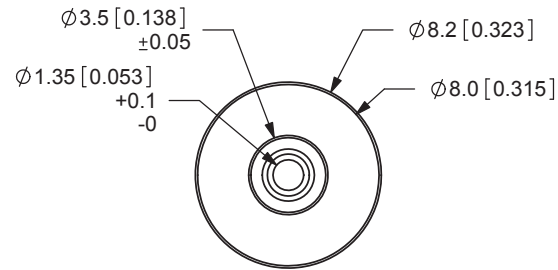


| REV. | DESCRIPTION | DATE |
|------|------------------|-----------|
| A | NEW DRAWING | 3/10/2006 |
| B | Added tolerances | 8/17/2006 |
| C | rating update | 6/7/2011 |



SCALE 1:1

SPECIFICATIONS:
 RATING: 16V DC @ 4A
 OPERATING TEMP: 0 ~ +40°C

| | MATERIAL | PLATING |
|-----------|----------|-------------|
| BARREL | Brass | Nickel |
| INSULATOR | POM | Black Color |
| HOUSING | PVC | Black Color |

TOLERANCE:
 ±0.2mm UNLESS OTHERWISE
 SPECIFIED



CUI INC

20050 SW 112th Ave.
 Tualatin, OR 97062
 Phone: 503-612-2300
 800-275-4899
 Fax: 503-612-2383
 Website: www.cui.com

| | | |
|-------------------|--------------|--------------------|
| TITLE: DC PLUG | | REV: C |
| PART NO. PP3-002D | | UNITS: MM [INCHES] |
| DRAWN BY: ZRJ | APPROVED BY: | SCALE: 3:1 |

PC FILE NAME:
 PP3-002D

COPYRIGHT 2011 BY CUI INC.