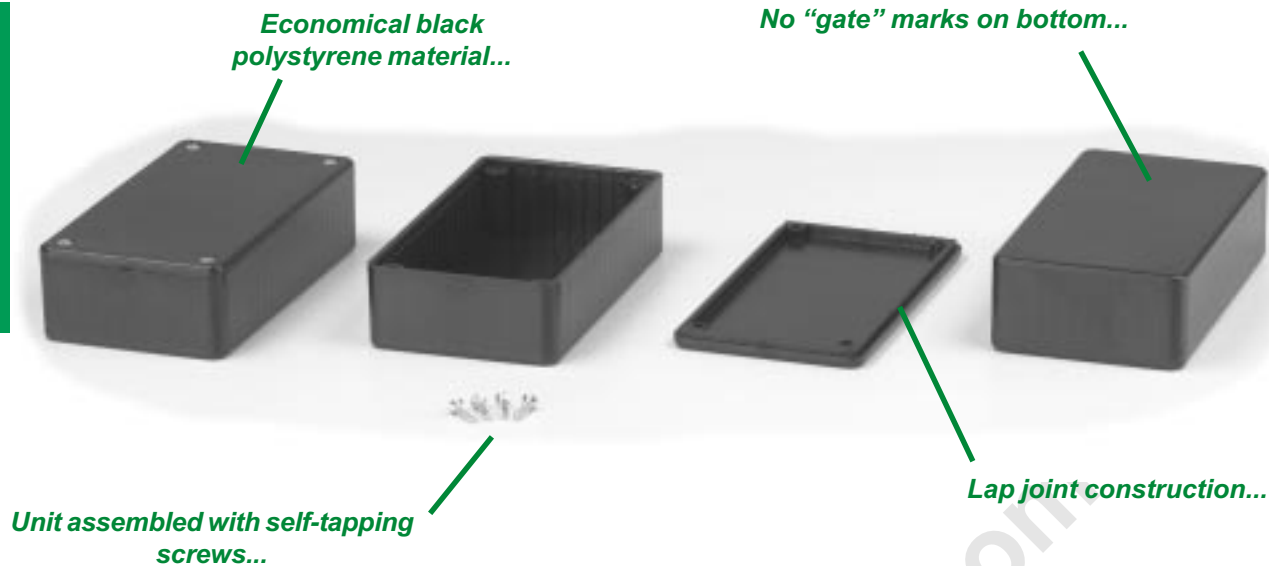


# Multipurpose - Polystyrene (1591 Series)

Plastic



## OTHER KEY FEATURES

- Electronic instrument enclosures, designed for mounting printed circuit boards.
- Integral card guides accept 1.5 mm (0.062") P.C. cards.
- Lap joint construction provides protection against access of dust and splashing water.
- Designed to meet IP54
- Molded in economical black polystyrene.
- Lid is secured with black anodized self-tapping #4 x 0.5" Philips screws.

## ACCESSORIES



### P.C. Board Card Adaptors

Allows horizontal mounting of P.C. board(s). See "Accessories Section" for full details!  
**1591Z6** - Package of 6  
**1591Z50** - Package of 50  
**1591Z100** - Package of 100



### Replacement Screws

Self-tapping type, black oxide, #4 x 0.5"  
**1591TS100BK** - Package of 100



### Flange Kits

Mount to either the rear (using glue) or can be attached to the lid using existing lid screws and holes. See "Accessories Section" for full details!



### Clear Lids

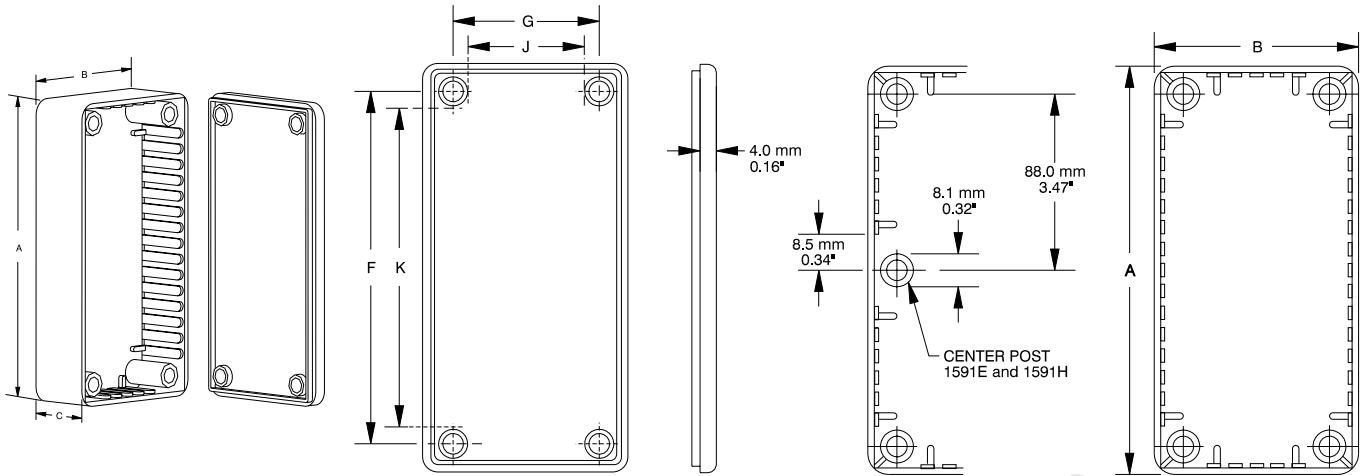
Stocked in prototype quantities - made of clear, flame retardant polycarbonate. Lid ONLY.  
**1591LC** - use with 1591L & M  
**1591AC** - use with 1591A  
**1591BC** - use with 1591B  
**1591CC** - use with 1591C  
**1591DC** - use with 1591D  
**1591EC** - use with 1591E  
**1591GC** - use with 1591G  
**1591HC** - use with 1591H  
**1591SC** - use with 1591S  
**1591TC** - use with 1591T  
**1591UC** - use with 1591U  
**1591VC** - use with 1591V



### Belt or Pocket Clip

Molded from tough nylon, includes 2 nylon screws and mounting template.  
**1599CLIP** - Black  
**1599CLIPGY** - Grey

# Multipurpose - Polystyrene (1591 Series)



Plastic

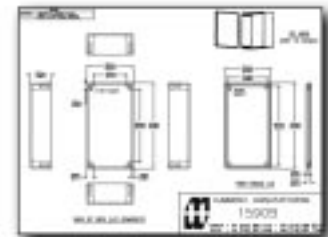
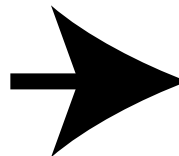
Lid (Inside & Edge View)

Top View

Part Number	Units	Dimensions						P.C. Card Clearance	
		A	B	C (No Lid)	F	G	J	K	
<b>1591MSBK</b>	inch mm	3.3 85	2.2 56	0.8 21	2.8 71	1.7 42	1.3 34	2.5 63	
<b>1591LSBK</b>	inch mm	3.3 85	2.2 56	1.4 35	2.9 73	1.7 44	1.4 35	2.5 64	
<b>1591ASBK</b>	inch mm	3.9 100	2.0 50	0.8 21	3.4 86	1.4 36	1.1 29	3.1 79	
<b>1591SSBK</b>	inch mm	4.3 110	3.2 82	1.6 40	3.8 98	2.7 70	2.4 61	3.5 89	
<b>1591BSBK</b>	inch mm	4.4 112	2.4 62	1.1 27	3.9 98	1.9 48	1.6 41	3.5 91	
<b>1591CSBK</b>	inch mm	4.7 120	2.6 65	1.4 36	4.2 106	2.0 51	1.7 44	3.9 99	
<b>1591TSBK</b>	inch mm	4.7 120	3.2 80	2.2 55	4.2 106	2.6 66	2.3 59	3.9 99	
<b>1591USBK</b>	inch mm	4.7 120	4.7 120	2.2 55	4.2 106	4.2 106	3.9 99	3.9 99	
<b>1591VSBK</b>	inch mm	4.7 120	4.7 120	3.5 90	4.2 106	4.2 106	3.9 99	3.9 99	
<b>1591GSBK</b>	inch mm	4.8 121	3.7 94	1.2 30	4.2 106	3.1 79	2.8 73	3.9 100	
<b>1591DSBK</b>	inch mm	5.9 150	3.2 80	1.8 46	5.4 136	2.6 66	2.3 59	5.0 129	
<b>1591HSBK</b>	inch mm	6.5 165	2.8 71	1.0 25	6.0 153	2.2 56	1.9 50	5.6 144	
<b>1591ESBK</b>	inch mm	7.5 191	4.3 110	2.2 57	6.9 176	3.8 96	3.5 89	6.6 170	

NOTES: - Assembled height = dimension "C" + 0.16" (4.0 mm)  
- Average wall thickness: 0.08" (2.0 mm)

For detailed drawings, CAD files and color photos visit our website at:  
[www.hammondmg.com](http://www.hammondmg.com)



**CANADA**  
Guelph, Ontario (519) 822-2960  
St. Laurent, Quebec (514) 343-9010  
**USA**  
Cheektowaga, NY (716) 651-0086

[www.hammondmg.com](http://www.hammondmg.com)

**EUROPE**  
Basingstoke, UK +44 1256 812812

**AUSTRALASIA**  
Queenstown, SA, Australia +61 8 8240 2244