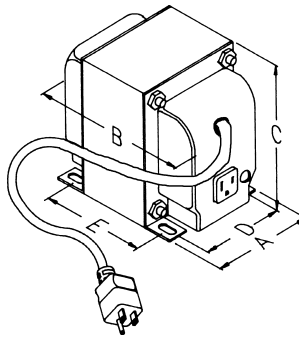


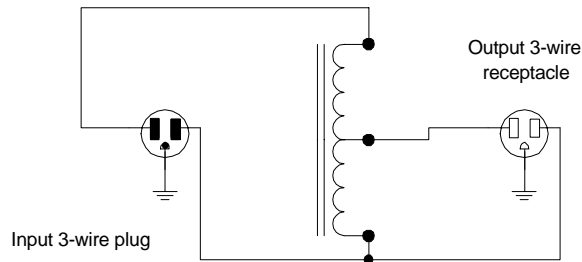
# "Auto" (Plug In) & Line Transformer Accessories

## 175 SERIES LINE - STEP DOWN PLUG IN AUTOTRANSFORMERS (230V to 115V)

- Single winding, **does not provide isolation**, for use where equipment is already isolated and only voltage change is required.
- World wide applications, 50 or 60 Hz. operation, step down (230VAC to 115 VAC).
- Standard 3-wire, grounded plug (for use **only** with adaptors listed on page 58 for proper grounding).
- Output connected to standard 115V - 3 wire grounded receptacle.
- 5 foot "U ground" cord & plug.



Cat. No.	Capacity VA	Dimensions					Wt. Lbs.
		A	B	C	D	E	
175A	100	3.13	3.25	3.81	2.50	1.94	3.5
175B	200	3.13	3.50	3.81	2.50	2.19	4.5
175C	300	3.13	4.00	3.81	2.50	2.69	6.0
175D	500	3.75	4.50	4.56	3.00	3.31	10.0
175E	750	3.75	5.50	4.56	3.00	4.31	14.0
175F	1000	3.75	5.50	4.56	3.00	4.31	14.5
175G	1500	4.38	6.63	5.25	3.50	5.10	22.0



## INTERNATIONAL - GROUNDED ADAPTOR PLUGS

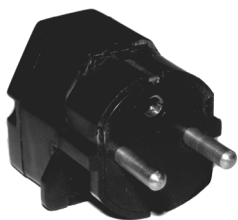
- For use with our 171, 172, 175, 179, 289 & 298 transformers.
- Heavy duty design with plastic shell & double wipe contacts.
- Allows for ground connection between equipment and international power sources.
- With a set of all 4 adaptors, they will accept equipment with plugs from virtually every country except South Africa!
- **Adaptors do not affect voltages**, they are a mechanical device only to match foreign "pin-outs" of receptacles and/or plugs.



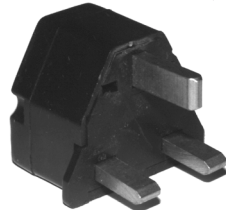
Rear View of all adaptors

Cat. No.	Grounded Plug Type	Used in the Countries of:
298G4	European	Austria, Belgium, Finland, France, Germany, Middle East, Netherlands, Norway, Parts of Africa/Asia/South America/China/Tahiti & Caribbean, Sweden
298G3	British	Hong Kong, Ireland, Malaysia, Parts of Africa/Caribbean, Singapore, U.K.
298G6	Australian	Australia, People's Republic of China, S. Pacific Islands, New Zealand
298G7	N. American	Canada, Parts of the Caribbean/ South America, Philippines, USA

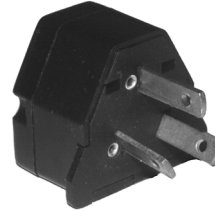
Line



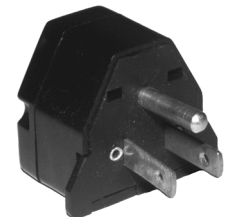
298G4



298G3



298G6



298G7