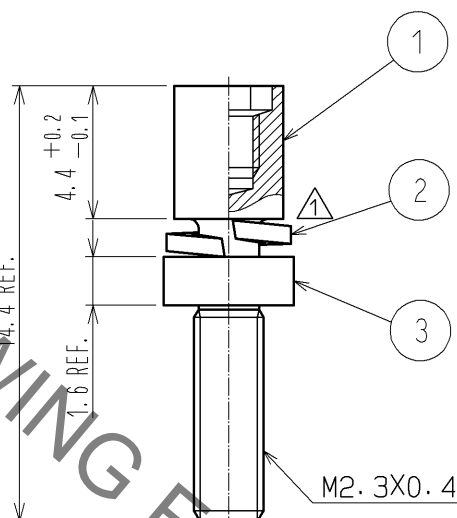
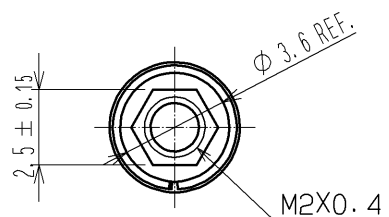
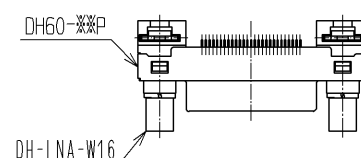


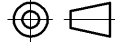


HRS DRAWING FOR REFERENCE



- NOTE ① THIS PRODUCT IS ASSEMBLED TO A "DH60-**P".
THIS PRODUCT IS USED WHEN A PANEL ISN'T USED.
② THIS PRODUCT IS PACKED IN A BAG. (QUANTITY IN A BAG : 200 pcs.)

① ASSEMBLED(1:1)



			3		STEEL		OVER PLATING : NICKEL 5 μm MIN UNDER PLATING : COPPER 1 μm MIN					
1	STEEL	OVER PLATING : NICKEL 5 μm MIN UNDER PLATING : COPPER 1 μm MIN			2	STEEL	OVER PLATING : NICKEL 5 μm MIN UNDER PLATING : COPPER 1 μm MIN					
NO.		MATERIAL	FINISH , REMARKS			NO.		MATERIAL	FINISH , REMARKS			
UNITS mm			SCALE 4 : 1		COUNT 1	DESCRIPTION OF REVISIONS DIS-E-003059			DESIGNED MO. SHIMOYAMA		CHECKED KN. ICHIKAWA	DATE 09.12.07
 HIROSE ELECTRIC CO., LTD.			APPROVED : AO. SUZUKI			09.04.27	DRAWING NO.	EDC4-126530-00				
			CHECKED : MO. SHIMOYAMA			09.04.24	PART NO.	DH-LNA-W16				
			DESIGNED : TS. ITO			09.04.24	CODE NO.	CL244-0005-5-00				
			DRAWN : TS. ITO			09.04.24	