

Mini-Com® Flush Mount Modular Patch Panels

specifications

Flush mount modular patch panels shall consist of a metal panel with molded rear snap-in faceplates. Patch panels shall accept all Mini-Com® Modules for UTP, STP, fiber, or A/V applications and shall mount to standard 19" racks. Patch panels shall be available in 24-port and 48-port standard density and 48-port and 72-port high density. Flush mount patch panels shall be easy to identify with pre-numbered ports. Angled patch panels shall be designed at an optimum angle to help route the cable.



technical information

Mounting options:	Mounts to standard 19" rack
Material:	Stamping is CRS and faceplate is ABS
Packaging:	Packaged with appropriate pre-installed snap in faceplates and a set of mounting screws (#12-24 and M6)

key features and benefits

Modular	Accepts all Panduit Mini-Com® Modules to mix and match media types in the same panel
Angled design	Allows cable to flow to each side of the rack and minimize the need for horizontal cable managers by enabling patch cords to be routed directly into vertical cable managers which leads to increased closet density
Port and panel identification	Pre-numbered ports with write on areas (except 48-port high density)
Optional strain relief bars	To help support and manage cables
Optional filler panels	Flat and angled design fill unused rack openings to provide a clean and consistent look when used with any version of Panduit patch panels
Optional extender bracket	Allows 19" patch panels to be mounted on a 23" rack
High density	More modules per rack space

applications

Mini-Com® Flush Mount Modular Patch Panels are ideal for multi-media applications; they accept all Mini-Com® Modules. Flat and angled designs in various port densities available to fit most needs, include pre-numbered port identification. Angled patch panels are available for applications in which rack space is limited. The design allows cable

to flow to each side of the rack, minimizing the need for horizontal cable managers and increasing the density of the rack space. Flush mount patch panels can mount on a standard 19" rack or a 23" rack when using the extender brackets PEB1 or PEB2.

Mini-Com® Flat Flush Mount Patch Panels

24-port, 1 RU: CPP24FMWBLY
48-port, 2 RU: CPP48FMWBLY

Mini-Com® Flat Flush Mount High Density Patch Panels

48-port, 1 RU: CPP48HDWBLY*
48-port, 1 RU: CPP48HDEWBL
72-port, 2 RU: CPP72FMWBLY

Mini-Com® Angled Flush Mount Patch Panels

24-port, 1 RU: CPPA24FMWBLY
48-port, 2 RU: CPPA48FMWBLY

Mini-Com® Angled Flush Mount High Density Patch Panels

48-port, 1 RU: CPPA48HDWBLY*
48-port, 1 RU: CPPA48HDEWBL
72-port, 2 RU: CPPA72FMWBLY

Vertical Number Patch Panels for Switch Patching

48-port, angled, 1 RU: CPPA48HDVNSWBL
48-port, flat, 1 RU: CPP48HDVNSWBL
48-port, flat, 2 RU: CPP48FMVNSWBLY

Label Options for Standard Density Patch Panels

Laser/ink jet: C252X030FJJ
TDP43ME: C252X030YPT
PanThe™ LS8E: C252X030FJC
Cougar LS9: T031X000FJC-BK

Strain Relief Bars

Straight: SRBS19BL-XY
Extended, 2": SRB19BLY
With hook and loop ties: SRBM19BLY
With adjustable clips: SRBWYC
Deep, 5": SRB19D5BLY
Deep, 7": SRB19D7BLY
Multi-depth: SRB19MDBL

Rack Filler Panels

See www.Panduit.com or catalog for rack filler panel options.

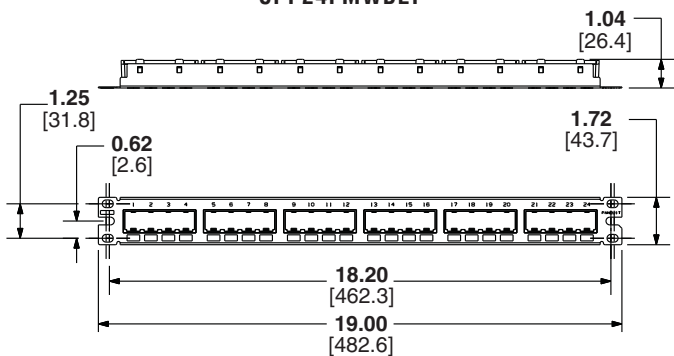
Extender Brackets

1 RU: PEB1
2 RU: PEB2

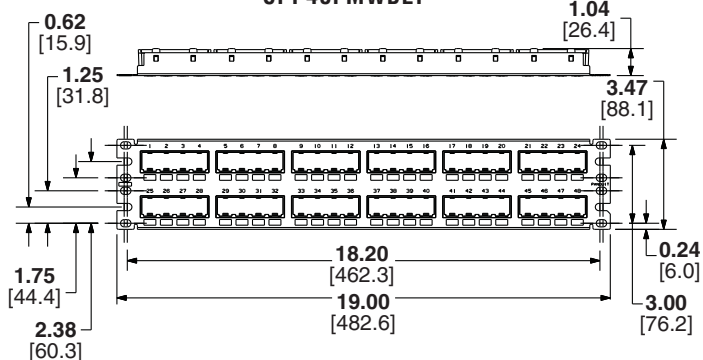
*Space not available for port labels.

Mini-Com® Flush Mount Modular Patch Panels

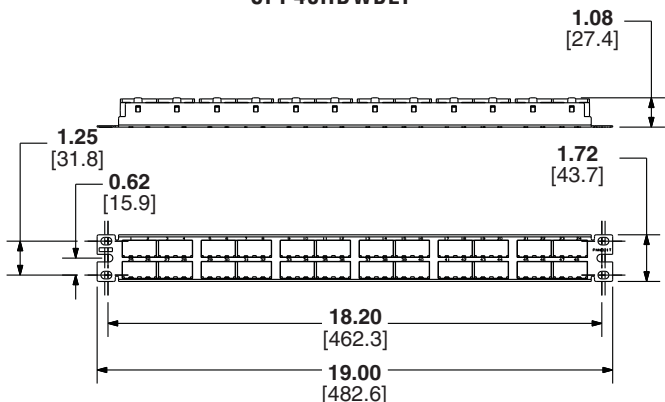
CPP24FMWBLY



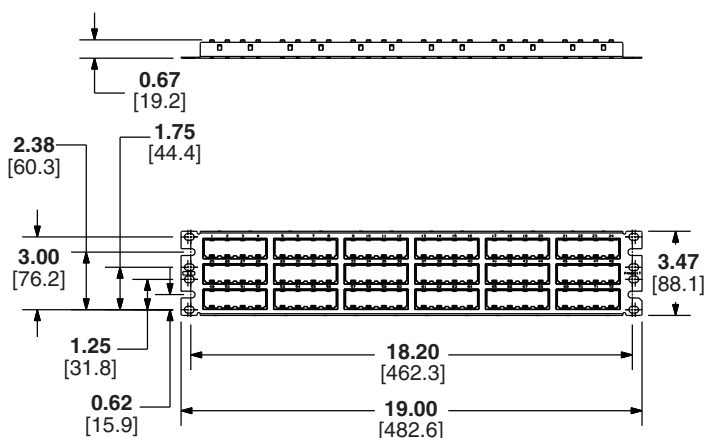
CPP48FMWBLY



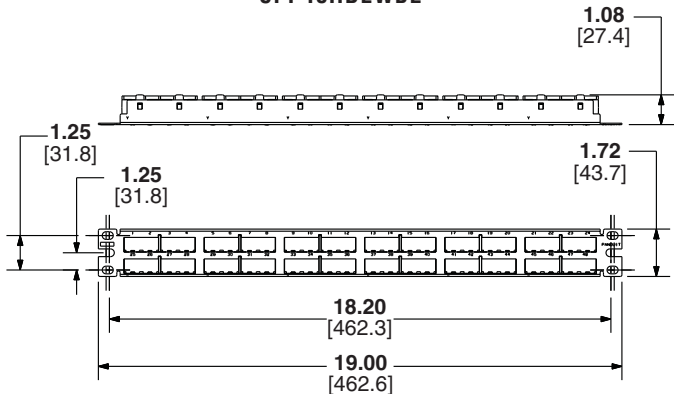
CPP48HDWBLY



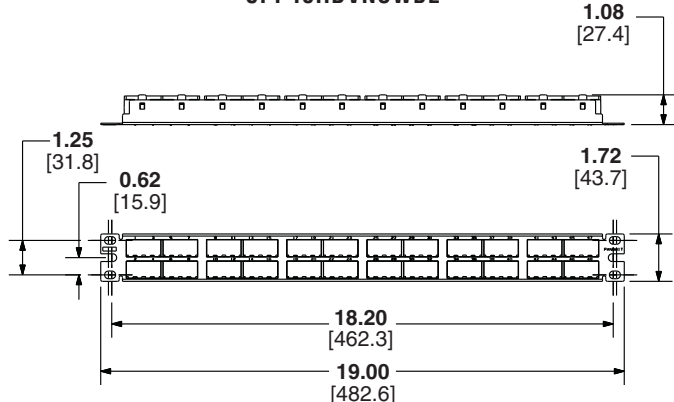
CPP72FMWBLY



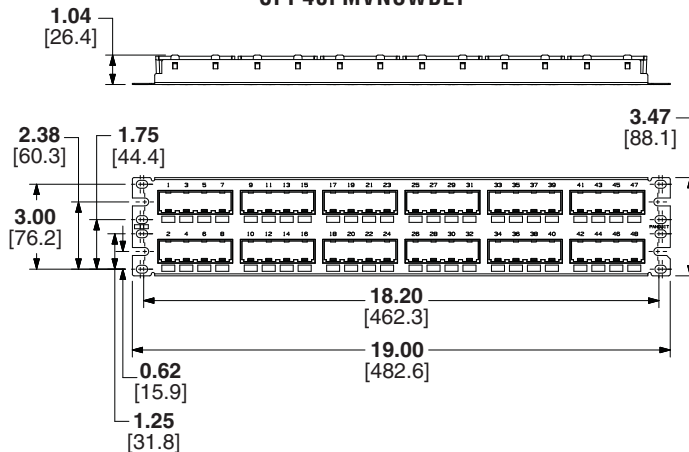
CPP48HDEWBL



CPP48HDVNSWBL

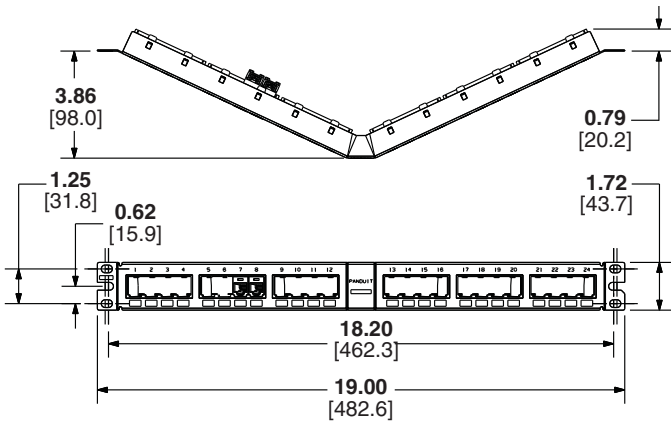


CPP48FMVNSWBLY

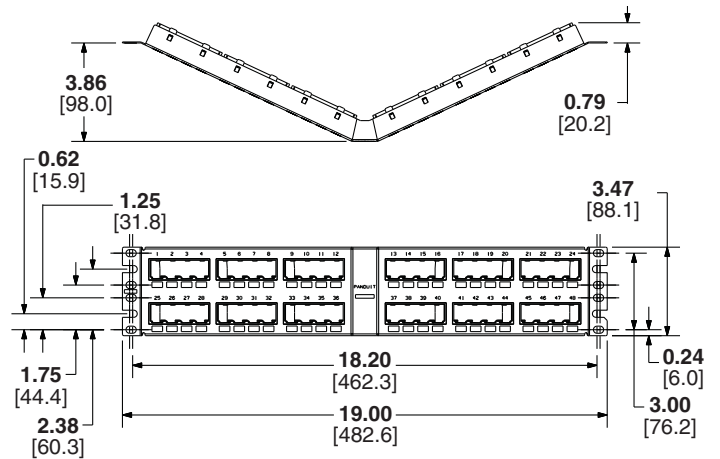


Mini-Com® Flush Mount Modular Patch Panels

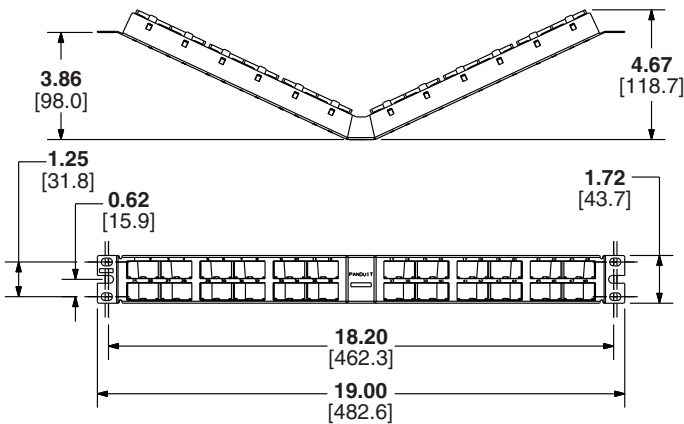
CPPA24FMWBLY



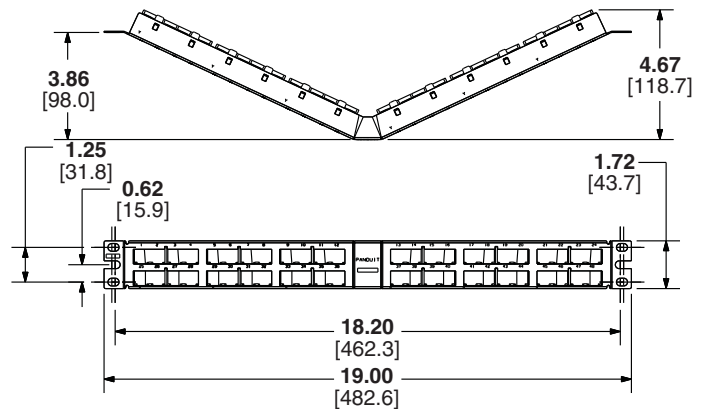
CPPA48FMWBLY



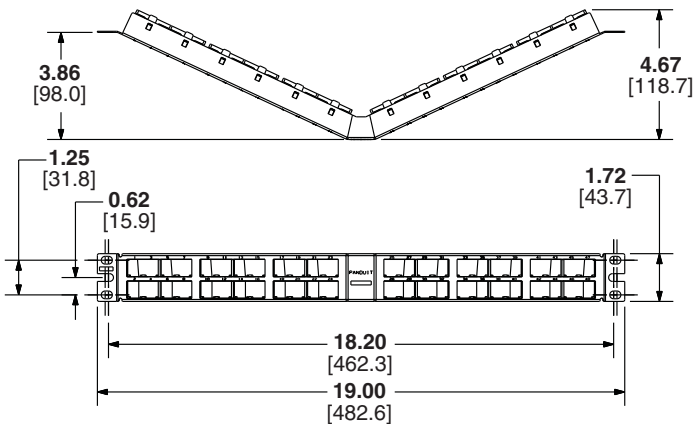
CPPA48HDWBLY



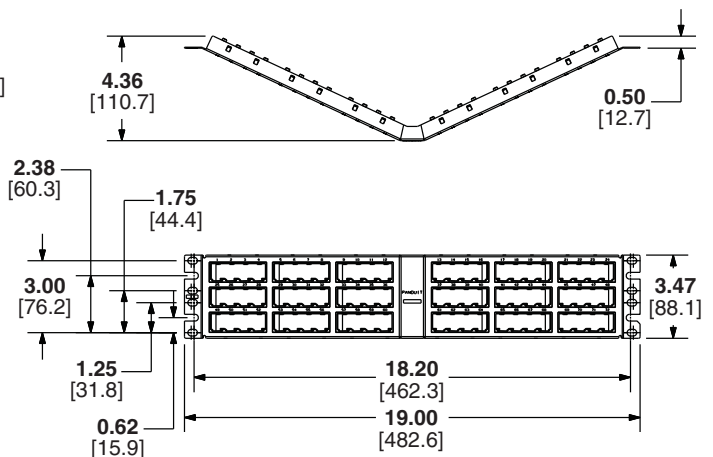
CPPA48HDEWBL



CPPA48HDVNSWBL



CPPA72FMWBLY



Dimensions are in inches [Dimensions in brackets are metric]

WORLDWIDE SUBSIDIARIES AND SALES OFFICES

PANDUIT CANADA
Markham, Ontario
cs-cdn@panduit.com
Phone: 800.777.3300

PANDUIT EUROPE LTD.
London, UK
cs-emea@panduit.com
Phone: 44.20.8601.7200

PANDUIT SINGAPORE PTE. LTD.
Republic of Singapore
cs-ap@panduit.com
Phone: 65.6305.7575

PANDUIT JAPAN
Tokyo, Japan
cs-japan@panduit.com
Phone: 81.3.6863.6000

PANDUIT LATIN AMERICA
Guadalajara, Mexico
cs-la@panduit.com
Phone: 52.33.3777.6000

PANDUIT AUSTRALIA PTY. LTD.
Victoria, Australia
cs-aus@panduit.com
Phone: 61.3.9794.9020

For a copy of Panduit product warranties, log on to www.panduit.com/warranty

For more information

Visit us at www.panduit.com

Contact Customer Service by email: cs@panduit.com
or by phone: 800.777.3300

PANDUIT®

© 2013 Panduit Corp.
ALL RIGHTS RESERVED.
OTSP33--WW-ENG
Replaces WW-OTSP25
8/2013