

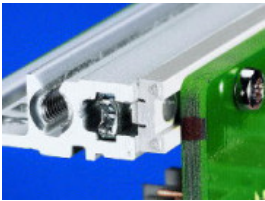
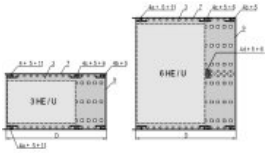
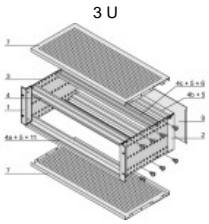
Features:

- Subrack in robust ("heavy") version for CompactPCI plug-in units with high insertion and extraction forces, conforms to IEEE 1101.10 and IEC 60297-3-103
- Rear horizontal rail with insulation strip for backplane mounting
- Typical shielding 40 dB at 1 GHz, 30 dB at 2 GHz (as to VG 95373, part 15), on condition that the front is sealed with shielded front panels



Technical information:

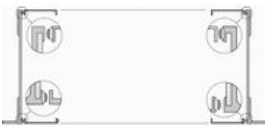
Description	Height	Width	Depth D	Depth D1	Depth D2	Depth D3
Kit, shielded, for CompactPCI, for backplane mounting, without rear I/O	3 U	84 HP	235 mm	175 mm	160 mm	



Rear horizontal rail with insulation strip for backplane mounting

Delivery comprises: kit

Item	Qty	Description
1	2	19" support bracket for EMC textile gasket
2	2	Corner profile to rear for EMC textile gasket
3	2	Side panel type F
4	1	Front horizontal rail (H-KD)
4 a	1	Front horizontal rail IEEE (H-LD)
4 b	2	Rear horizontal rail (L-KD)
4 c	2	Rear horizontal rail (H-ST) with insulation strip for backplane mounting
5	6	Threaded insert (pre-fitted)
6	2	Insulation strip (pre-fitted)
7	2	EMC cover plate
8	1	EMC gasketing material (pre-fitted)
9	1	Rear panel
10	1	Assembly kit
11	2	Perforated strip (pre-fitted in items 4+4a)
12	1	User manual



Plan view shielding front/rear side

