

# Cord-retention safeguard for IEC appliance couplers



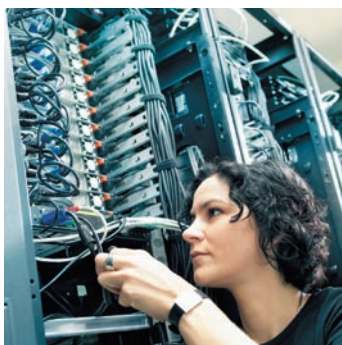


## > Locking system for IEC appliance power inlets and outlets

### Benefits

- highest possible level of safety and reliability against unintentional unplugging of power cords
- most cost-effective plug-retention safeguard on the market
- no extra assembly required
- no additional components required
- attractive design
- simple, obvious operation
- available for 10 A and 16 A IEC connectors
- available for power interconnection cords
- extraction force at least 200 N



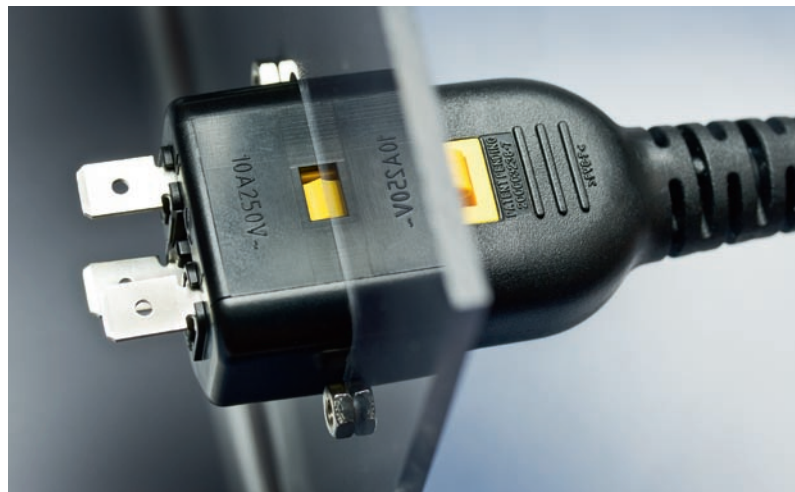


## > The safe, secure alternative

When it comes to medical analysis, diagnosis or laboratory equipment, portable instruments, professional A/V applications or equipment in the food-stuffs industry, the loss of power can have serious consequences. Especially with electrical equipment that can be moved while in operation, there is the danger that the power cord can be unintentionally pulled out of the unit. Plug-retention safeguards can prevent this. Conventional plug-retention systems consist of safety brackets mounted on the power plug. Depending on the type of equipment and because of the many types and shapes of power sockets they have, it is important to select the correct bracket shape.

### **V-Lock – the safe, secure alternative**

With the V-Lock system, SCHURTER offers a simple, attractive alternative. With V-Lock, the power connector is equipped with a pin that interlocks with a special notch in the inlet on the power cord and thus reliably prevents the cord from being pulled out unintentionally. The advantage of this scheme is that no clamping system specific to a unit's power inlet or retaining bracket must be adapted and attached.



The lock is released by pressing a finger on the disengaging lever. This lever is easily identified due to its bright yellow color, a feature that also distinguishes this scheme from conventional pluggable power supply systems. The extraction force is at least 200 N.

A variety of inlet and outlet types, Power Entry Modules and numerous country-specific power cords are available with this feature. The V-Lock locking system can be integrated into power couplings in compliance with IEC 60320 for 10 A and 16 A.

## > Product range

### Power Entry Modules with V-Lock without filter | [www.schurter.com/pg05](http://www.schurter.com/pg05)



Power Entry Modules (PEMs) consist of an appliance inlet along with additional functions: switch, circuit breaker, fuse holder, voltage selector. PEMs come in versions for screw-on or snap-in assembly. For the internal wiring the system features quick connect or solder terminals.

4707	6135	6136	6145	6166	DC11	DC21x	DF11
EC11	EF11	GRM1	GRM2	GSF1	GSF2	KD	KE
KEB1	KEC	KG	KP (outlet)	KP (switch)	KP (fuseholder)		

### Power Entry Modules with V-Lock and line filter | [www.schurter.com/pg06](http://www.schurter.com/pg06)



Power Entry Modules (PEMs) with a line filter also come in medical versions. There are various combinations available with switches, circuit breakers, fuse holders and voltage selectors. PEMs come in versions for screw-on or snap-in assembly. For the internal wiring the system features quick connect or solder terminals.

5120	5130	5145	5150	5707	C20F	CD	CE
CG	DC12	DC22	DF12	EC12	EF12	FGS	KFB1
KFB2	KFC	KFS	KFX				

### Power inlets and outlets with V-Lock | [www.schurter.com/pg07](http://www.schurter.com/pg07)



IEC appliance power inlets and outlets that meet international standards are available for 10 A and 16 A. IEC appliance power inlets come in versions for screw-on, snap-in or «sandwich» assembly. For the internal wiring the system features quick connect, IDC or solder terminals.

1601	1621	1624	4797	4798	6010	6048	6061
6062	6170	6610	6061	6600-3	6600-4	6602-4	GSP1
GSP2							

### Power cords with country-specific plugs | [www.schurter.com/pg07\\_2](http://www.schurter.com/pg07_2)



Power cords with a rated current of 10 A with country-specific plugs are available in these lengths: 1.5, 2.0 and 3.0 m.

Power cords with a rated current of 16 A with country-specific plugs are available in the length of 2.0 m.

Other variants on demand.

**Countries:** USA, Europe (Schuko), Great Britain, Switzerland, Australia, Japan, China, Italy, South Africa

### Interconnection cords | [www.schurter.com/pg07\\_2](http://www.schurter.com/pg07_2)



Interconnection cords with a rated current of 10 A are available in these lengths: 0.6, 1.5 und 2.0 m.

Interconnection cords with a rated current of 16 A are available in the length of 2.0 m.

Other variants on demand.

**“SCHURTER is a leading partner in the electronics and electrical industry. Our innovative products provide the desired competitive advantage to the developer of devices.”**

Albert Bürgler, Product Manager, SCHURTER Group, Division Components

