

Distributed by:

JAMECO[®]
ELECTRONICS

www.Jameco.com ♦ 1-800-831-4242

The content and copyrights of the attached
material are the property of its owner.

Jameco Part Number 749417

THIS DRAWING IS UNPUBLISHED.

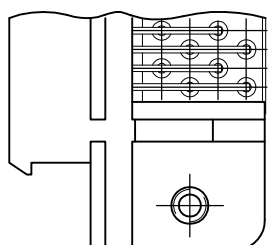
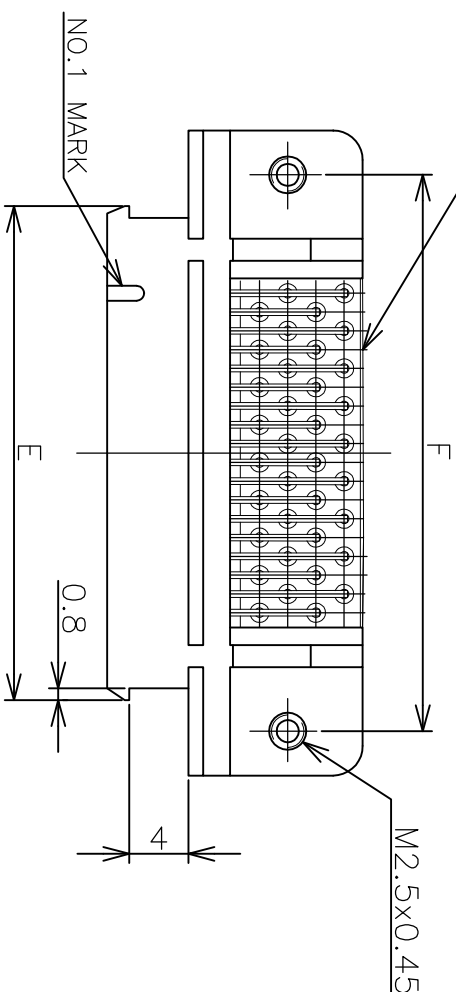
RELEASED FOR PUBLICATION

FEB. 2003.

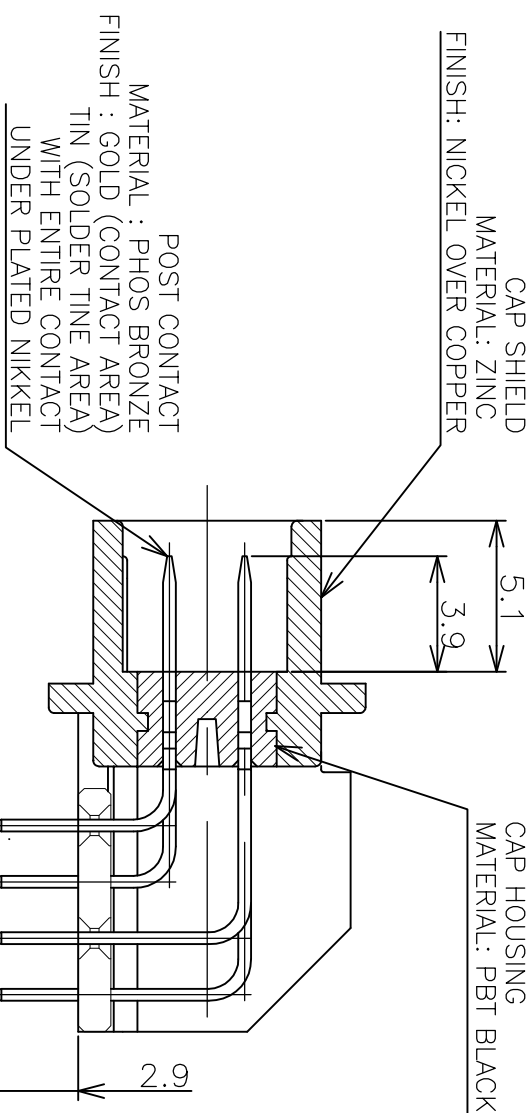
© COPYRIGHT 2003

BY TYCO ELECTRONICS CORPORATION.

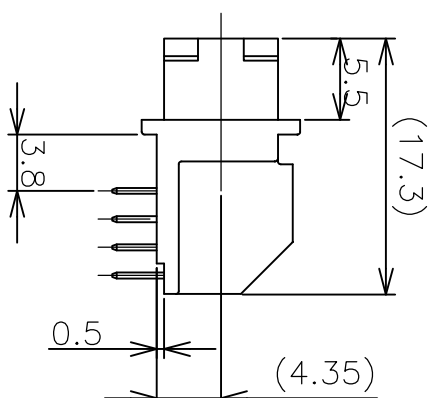
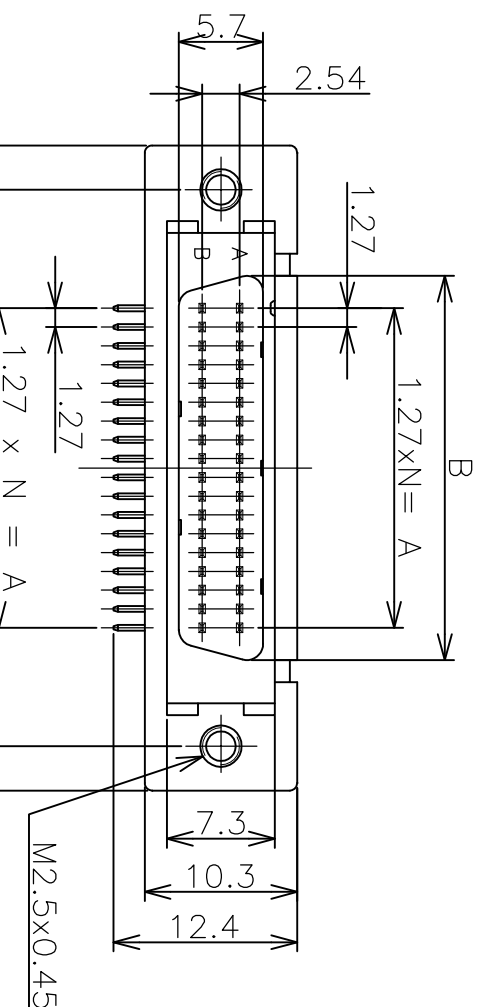
ALL RIGHTS RESERVED.

TINE PLATE
MATERIAL : PBT (BLACK)

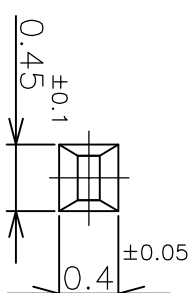
50POS (—4) ONLY



(SCALE 4:1)



LEAD FREE

TOP OF POST (SOLDER SIDE)
(SCALE 20:1)

(BSC)

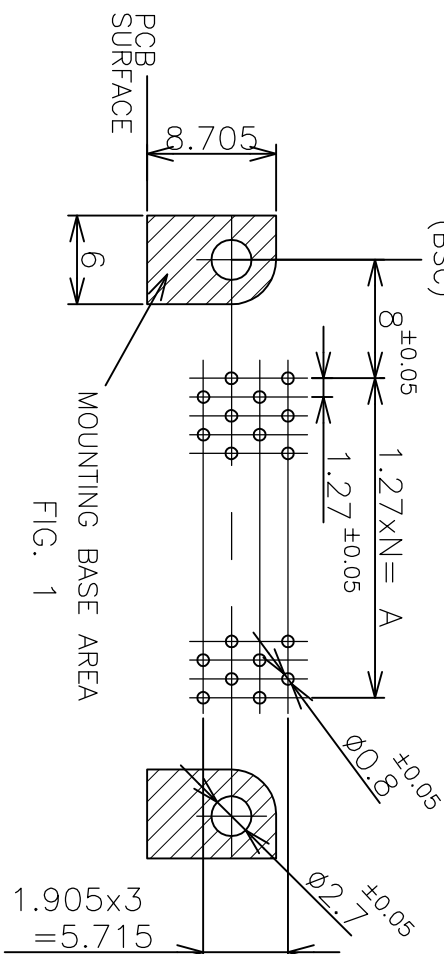
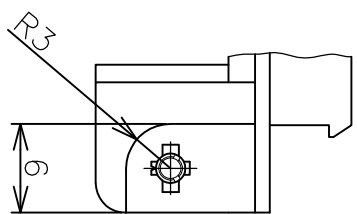


FIG. 1

BOTTOM VIEW OF MOUNT

PCB
SURFACE

96	47	59.69	64.06	75.7	81.7	71.49	75.7	0.00076 MIN	2-5174225-6
68	33	41.91	46.28	57.9	63.9	53.71	57.9		2-5174225-5
50	24	30.48	34.85	46.5	52.5	42.28	46.5		2-5174225-4
36	17	21.59	25.96	37.6	43.6	33.39	37.6		2-5174225-3
96	47	59.69	64.06	75.7	81.7	71.49	75.7		5174225-6
68	33	41.91	46.28	57.9	63.9	53.71	57.9		5174225-5
50	24	30.48	34.85	46.5	52.5	42.28	46.5	0.0002 MIN	5174225-4
36	17	21.59	25.96	37.6	43.6	33.39	37.6		5174225-3
28	13	16.51	20.88	32.5	38.5	28.31	32.5		5174225-2
20	9	11.43	15.8	27.4	33.4	23.23	27.4		5174225-1
POS	N	A	B	C	D	E	F	GOLD THK	PART NUMBER

THIS DRAWING IS A CONTROLLED DOCUMENT.

DWG
Roy Hao
17Aug04Tyco Electronics
Kowasaki, Japan

Tyco Electronics Corporation

DIMENSIONS:

TOLERANCES UNLESS
OTHERWISE SPECIFIED:APVD
Steven Yoo
17Aug04NAME
Tyco Electronics

POST HEADER (HORIZONTAL M2.5)

AMPLIMITE .050 SERIES 2

TYPE B

RESTRICTED TO

- 1 P.C BOARD HOLE LAY-OUT AS SHOWN FIG. 1
- 2 USE SCREW SIZE ; M2.5 PAN-HEAD SCREW