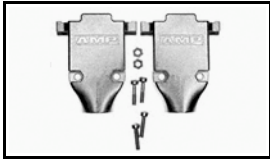


## 5745173-1 Product Details

[Share](#) [Print](#) [Email](#)



**5745173-1**

TE Internal Number: 5745173-1

 **Active**

 [View 3D PDF](#)

### Cable Clamps

 **Always EU RoHS/ELV Compliant**  
(Statement of Compliance)

### Product Highlights:

- Backshell/Cable Clamp
- Cable Clamp Type = Two-Piece RFI/EMI Shield
- 180° Cable Exit Angle
- Cable Insulation Diameter = 13.46 mm
- Shell Size = 3

[View all Features](#)

### Quick Links

- ▶ [Pricing & Availability](#)
- ▶ [Search for Tooling](#)
- ▶ [Product Feature Selector](#)
- ▶ [Contact Us About This Product](#)

[Add to My Part List](#)

[Request Sample](#)

[Find Similar Products](#)

[Buy Product](#)

## Documentation & Additional Information

### Product Drawings:

- [CABLE CLAMP KIT, SIZE 3, 180 DEGREE, AMPLIMITE](#) (PDF, English)

### Catalog Pages/Data Sheets:

- [AMPLIMITE Subminiature D Connectors - Cable Connectors](#) (PDF, English)

### Product Specifications:

- [AMPLIMITE Shielded Cable Clamp Assemblies and Access...](#) (PDF, English)

### Application Specifications:

- None Available

### Instruction Sheets:

- [AMPLIMITE Connector HD-20 Shielded Cable Clamp Kits](#) (PDF, English)

### CAD Files: (CAD Format & Compression Information)

- [2D Drawing](#) (DXF, Version 0)
- [3D Model](#) (IGES, Version 0)
- [3D Model](#) (STEP, Version 0)

[List all Documents](#)

### Additional Information:

- [Product Line Information](#)

### Related Products:

- [Tooling](#)

## Product Features (Please use the Product Drawing for all design activity)

### Product Type Features:

- [Product Type](#) = Backshell/Cable Clamp
- [Cable Clamp Type](#) = Two-Piece RFI/EMI Shield
- [Shell Size](#) = 3
- [Grommets](#) = Without
- [Thread Size](#) = 4-40

### Mechanical Attachment:

- Long Turnable Jackscrew Part No. = 747784-3

### Electrical Characteristics:

- [Shielded](#) = Yes

### Dimensions:

- [Cable Insulation Diameter](#) (mm [in]) = 13.46 [0.530]

### Body Features:

- [Cable Exit Angle](#) = 180°
- Cable Clamp Material = Die Cast
- Shield Plating = Bright Nickel over Copper

### Industry Standards:

- [RoHS/ELV Compliance](#) = RoHS compliant, ELV compliant
- [Lead Free Solder Processes](#) = Not relevant for lead free process
- RoHS/ELV Compliance History = Always was RoHS compliant

### Packaging Features:

- [Packaging Method](#) = Individual Kit

**Other:**

- Brand = AMP
- Comment = Jackscrews must be purchased separately.; All parts are packaged unassembled.; Shielded cable clamps will not accept connector housings with clinch nuts.; For use with Grommet Set Part No. 747973-1

**Corporate Information**

[About TE](#)  
[Investors](#)  
[News Room](#)  
[Supplier Portal](#)  
[Careers](#)  
[Terms & Conditions](#)  
[Privacy Policy](#)

**Quick Links**

[Distributor Inventory](#)  
[Product Cross Reference](#)  
[Documents & Drawings](#)  
[Product Compliance Support Center](#)  
[Site Map](#)

**Customer Support**

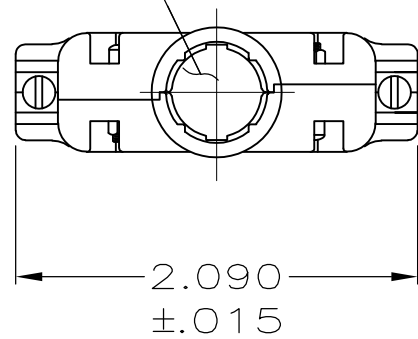
[Email or Chat With Us](#)  
[Find a Phone Number](#)  
[Knowledge Base](#)  
[Manage Your Account](#)

**Keep Me Informed**

LOC	DIST	REVISIONS					
		P	LTR	DESCRIPTION	DATE	DWN	APVD
GP	00		P	REVISED PER ECO-11-004835	11MAR11	RK	HMR

D

OPENING FOR CABLE  
(SEE DASH NO. FOR DIA.)



C

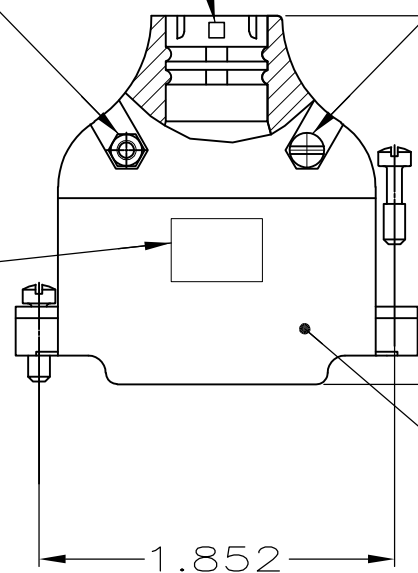
SIZE IDENTIFICATION LETTER  
MOLDED IN APPROXIMATE AREA  
SHOWN, SEE TABLE

#4-40 HEX NUT  
(QTY. 2)  
MATL: CARBON STEEL  
FINISH:

#4-40 FIL HD SCREW  
(QTY. 2)  
MATL: STEEL  
FINISH:

1.920  
±.015

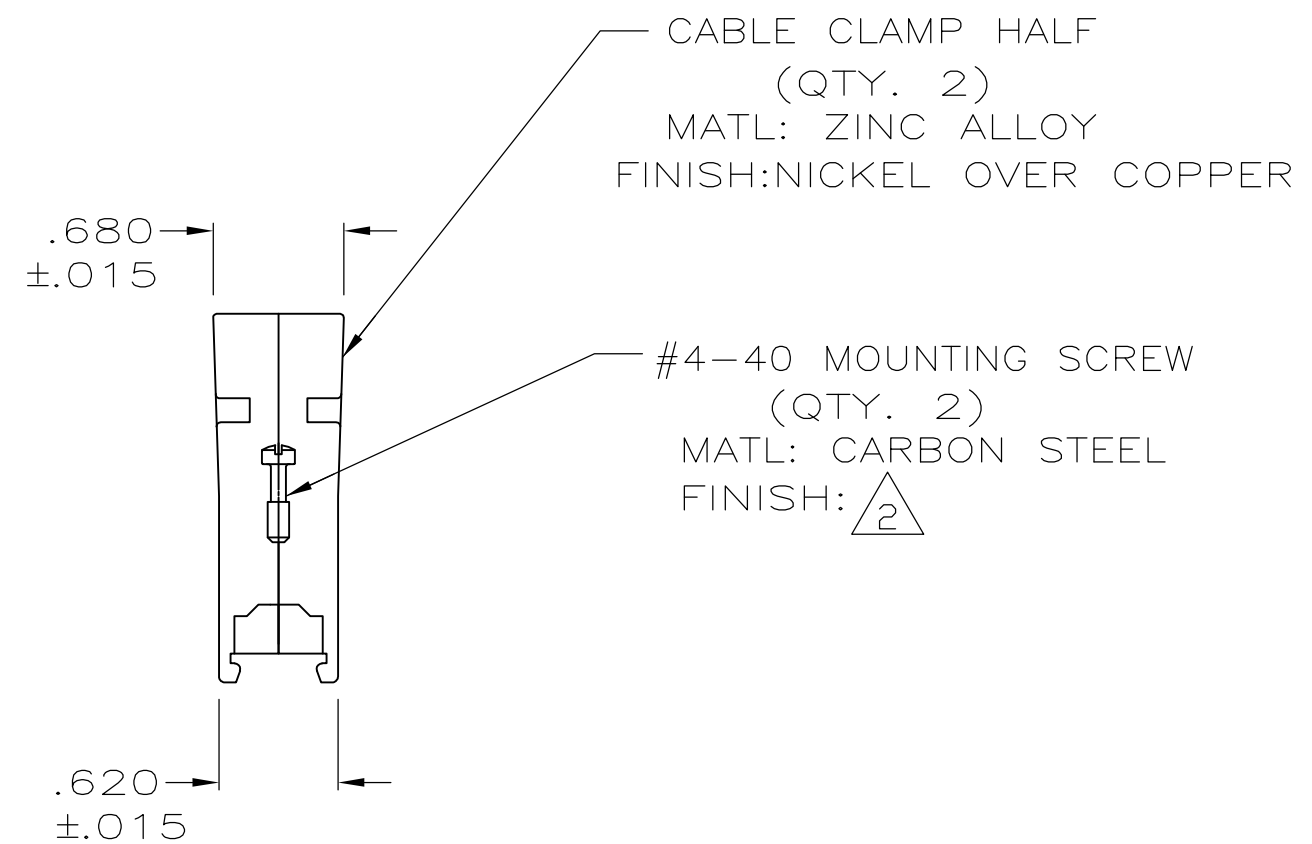
AMP LOGO



TEXTURED  
FINISH

B

- PARTS PACKAGED UNASSEMBLED, AS A UNIT KIT.
- ZINC PLATED .000200-.000400 THICK, CLEAR CHROMATE COATING.



D




C

5745173

B

A

D	.280	5745173-5
G	.350	5745173-4
K	.430	5745173-3
M	.480	5745173-2
P	.530	5745173-1
NECK SIZE IDENT	MAX CABLE DIA	PART NUMBER

THIS DRAWING IS A CONTROLLED DOCUMENT.		DWN B. MCMASTER	12AUG05	 TE Connectivity			
		CHK C. ROHDE	12AUG05				
DIMENSIONS: INCHES	TOLERANCES UNLESS OTHERWISE SPECIFIED:	APVD M. WALMSLEY	12AUG05	NAME  CABLE CLAMP KIT, SIZE 3, 180 DEGREE, AMPLIMITE			
	0 PLC ± -	PRODUCT SPEC	—				
	1 PLC ± -	APPLICATION SPEC	—				
	2 PLC ± -	—	—				
	3 PLC ± .005	WEIGHT	—	SIZE	CAGE CODE	DRAWING NO	RESTRICTED TO
	4 PLC ± -			A2	00779	C-5745173	—
	ANGLES ± -						
MATERIAL SEE CALLOUTS	FINISH SEE CALLOUTS	CUSTOMER DRAWING			SCALE	SHEET	REV
					1:1	1 of 1	P