

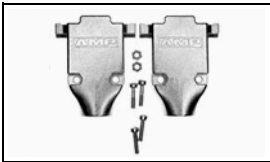


Have a Question?
Chat with a Product
Information Specialist

What can we help you find?

5745173-3 Product Details

Share Print Email



5745173-3

TE Internal Number: 5745173-3
 Active

View 3D PDF

Cable Clamps

Always EU RoHS/ELV Compliant (Statement of Compliance)

Product Highlights:

- Backshell/Cable Clamp
- Cable Clamp Type = Two-Piece RFI/EMI Shield
- 180° Cable Exit Angle
- Cable Insulation Diameter = 10.92 mm
- 25 Positions

[View all Features](#)

Quick Links

- ▶ [Pricing & Availability](#)
- ▶ [Search for Tooling](#)
- ▶ [Product Feature Selector](#)
- ▶ [Contact Us About This Product](#)

[Add to My Part List](#) [Request Sample](#) [Find Similar Products](#) [Buy Product](#)

Documentation & Additional Information	
<p>Product Drawings:</p> <ul style="list-style-type: none">• CABLE CLAMP KIT, SIZE 3, 180 DEGREE, AMPLIMITE (PDF, English) <p>Catalog Pages/Data Sheets:</p> <ul style="list-style-type: none">• AMPLIMITE Subminiature D Connectors - Cable Connectors (PDF, English) <p>Product Specifications:</p> <ul style="list-style-type: none">• AMPLIMITE Shielded Cable Clamp Assemblies and Access... (PDF, English) <p>Application Specifications:</p> <ul style="list-style-type: none">• None Available <p>Instruction Sheets:</p> <ul style="list-style-type: none">• AMPLIMITE Connector HD-20 Shielded Cable Clamp Kits (PDF, English) <p>CAD Files: (CAD Format & Compression Information)</p> <ul style="list-style-type: none">• 2D Drawing (DXF, Version 0)• 3D Model (IGES, Version 0)• 3D Model (STEP, Version 0) <p>List all Documents</p>	<p>Additional Information:</p> <ul style="list-style-type: none">• Product Line Information <p>Related Products:</p> <ul style="list-style-type: none">• Tooling

Product Features (Please use the Product Drawing for all design activity)	
<p>Product Type Features:</p> <ul style="list-style-type: none">• Product Type = Backshell/Cable Clamp• Cable Clamp Type = Two-Piece RFI/EMI Shield• Shell Size = 3• Grommets = Without• Thread Size = 4-40 <p>Mechanical Attachment:</p> <ul style="list-style-type: none">• Long Turnable Jackscrew Part No. = 747784-3 <p>Electrical Characteristics:</p> <ul style="list-style-type: none">• Shielded = Yes <p>Dimensions:</p> <ul style="list-style-type: none">• Cable Insulation Diameter (mm [in]) = 10.92 [0.430] <p>Body Features:</p> <ul style="list-style-type: none">• Cable Exit Angle = 180°• Cable Clamp Material = Die Cast• Shield Plating = Bright Nickel over Copper	<p>Configuration Features:</p> <ul style="list-style-type: none">• Number of Positions = 25 <p>Industry Standards:</p> <ul style="list-style-type: none">• RoHS/ELV Compliance = RoHS compliant, ELV compliant• Lead Free Solder Processes = Not relevant for lead free process• RoHS/ELV Compliance History = Always was RoHS compliant <p>Packaging Features:</p> <ul style="list-style-type: none">• Packaging Method = Individual Kit <p>Other:</p> <ul style="list-style-type: none">• Brand = AMP• Comment = Jackscrews must be purchased separately.; All parts are packaged unassembled.; Shielded cable clamps will not accept connector housings with clinch nuts.

Corporate Information

[About TE](#)
[Investors](#)
[News Room](#)
[Supplier Portal](#)

Quick Links

[Distributor Inventory](#)
[Product Cross Reference](#)
[Documents & Drawings](#)
[Product Compliance Support Center](#)

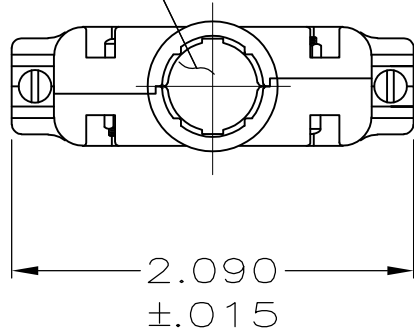
Customer Support

[Email or Chat With Us](#)
[Find a Phone Number](#)
[Knowledge Base](#)
[Manage Your Account](#)

LOC	DIST	REVISIONS					
		P	LTR	DESCRIPTION	DATE	DWN	APVD
GP	00		P	REVISED PER ECO-11-004835	11MAR11	RK	HMR

D

OPENING FOR CABLE
(SEE DASH NO. FOR DIA.)



C

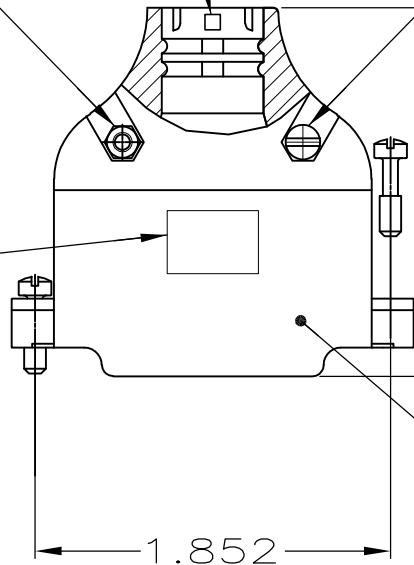
SIZE IDENTIFICATION LETTER
MOLDED IN APPROXIMATE AREA
SHOWN, SEE TABLE

#4-40 HEX NUT
(QTY. 2)
MATL: CARBON STEEL
FINISH:

#4-40 FIL HD SCREW
(QTY. 2)
MATL: STEEL
FINISH:

1.920
±.015

AMP LOGO



TEXTURED
FINISH

B

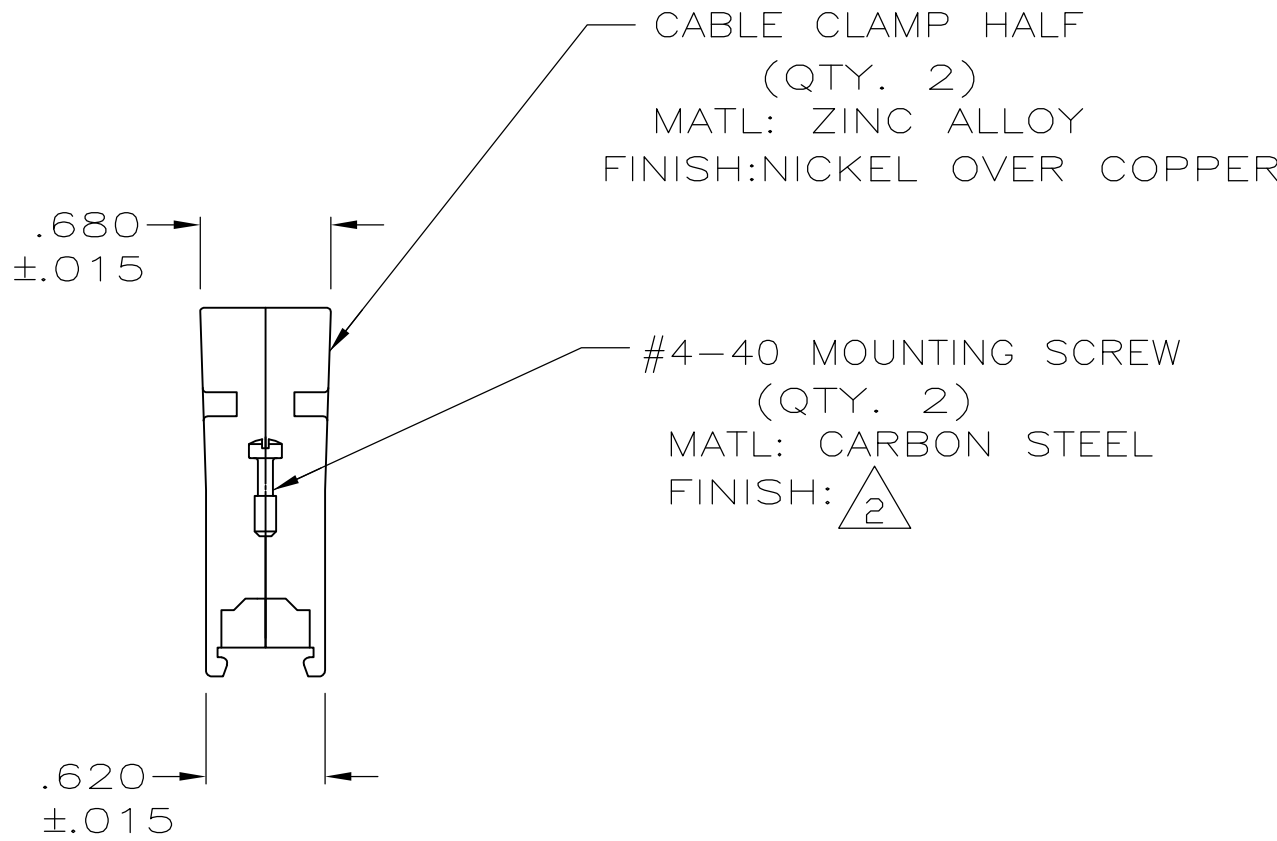
1. PARTS PACKAGED UNASSEMBLED, AS A UNIT KIT.
- ZINC PLATED .000200-.000400 THICK, CLEAR CHROMATE COATING.

D

C

5745173

B



D	.280	5745173-5
G	.350	5745173-4
K	.430	5745173-3
M	.480	5745173-2
P	.530	5745173-1
NECK SIZE IDENT	MAX CABLE DIA	PART NUMBER

A

THIS DRAWING IS A CONTROLLED DOCUMENT.		DWN B. MCMASTER	12AUG05	TE Connectivity		
		CHK C. ROHDE	12AUG05			
DIMENSIONS: INCHES		APVD M. WALMSLEY	12AUG05	NAME CABLE CLAMP KIT, SIZE 3, 180 DEGREE, AMPLIMITE		
		PRODUCT SPEC				
TOLERANCES UNLESS OTHERWISE SPECIFIED:		APPLICATION SPEC		SIZE	CAGE CODE	DRAWING NO
0 PLC ± -				A2	00779	C=5745173
1 PLC ± -		WEIGHT	-	SCALE		SHEET
2 PLC ± -		CUSTOMER DRAWING		1:1		1 of 1
3 PLC ± .005						REV
4 PLC ± -						P
ANGLES ± -						
FINISH						
SEE CALLOUTS						