

Distributed by:

**JAMECO**<sup>®</sup>  
ELECTRONICS

**www.Jameco.com ♦ 1-800-831-4242**

The content and copyrights of the attached  
material are the property of its owner.

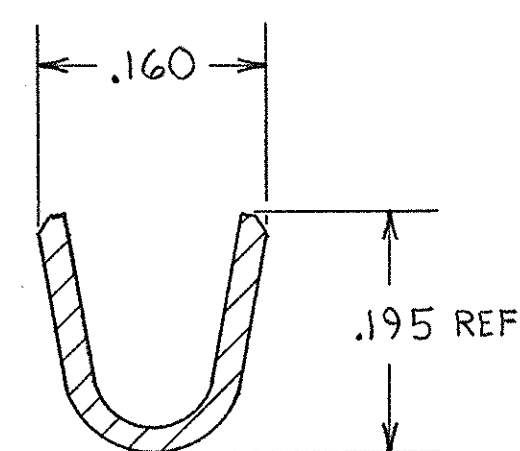
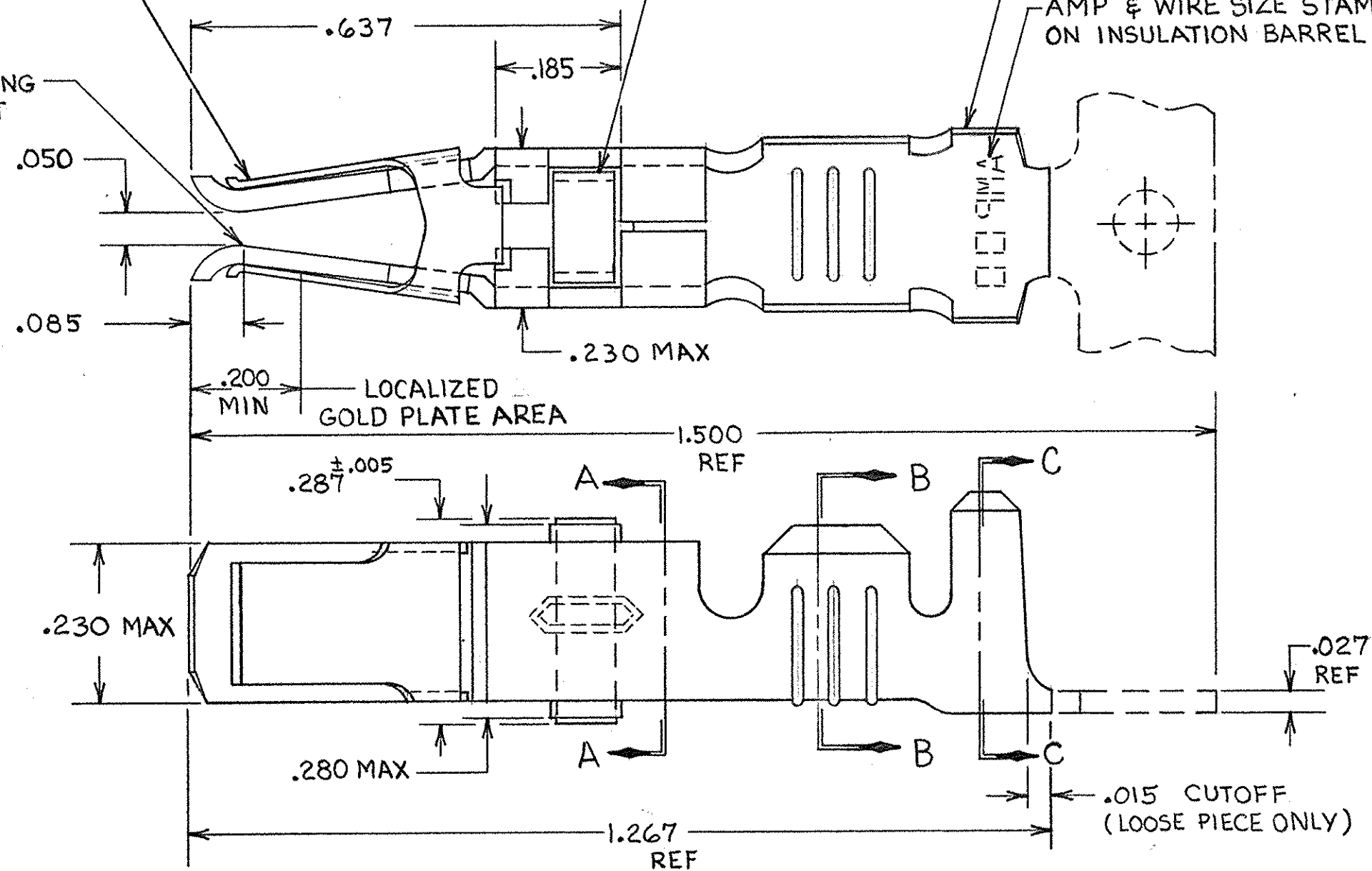
Jameco Part Number 527371

THIS DRAWING IS UNPUBLISHED. RELEASED FOR PUBLICATION

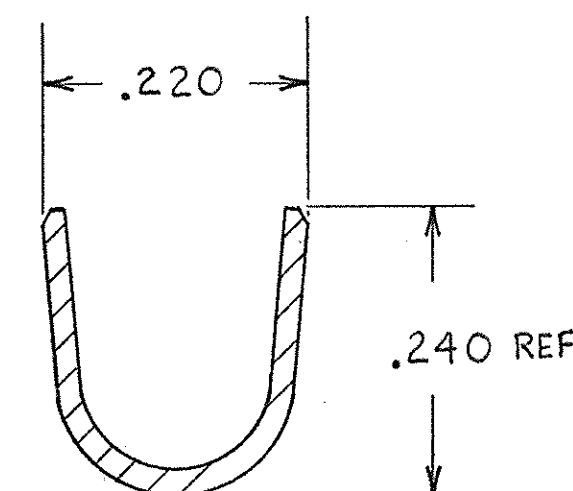
, 19

© COPYRIGHT 19 BY AMP INCORPORATED, HARRISBURG, PA. ALL INTERNATIONAL RIGHTS RESERVED. AMP PRODUCTS MAY BE COVERED BY U.S. AND FOREIGN PATENTS AND/OR PATENTS PENDING.

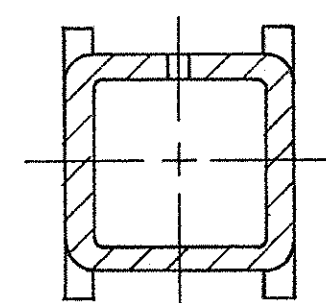
REVISIONS					
P	F	ZONE	LTR	DESCRIPTION	DATE
✓	✓		D	REDRAWN & REVISED PER ECN R-1451	9-25-85
✓	✓		E	OBSOLETE -3, -4, & 1-0 1R-2760	3-4-87
			F	REV PER 063D-269-03 CT	5-03

ASSIST SPRING  
MATL: STAINLESS STEEL  
PER QQ-S-766POINT OF PLATING  
MEASUREMENTTERMINAL LATCH  
MATL: NYLON  
COLOR: (SEE TABLE)CONTACT BODY  
MATL: COPPER PER QQ-C-576  
FINISH: (SEE TABLE)AMP & WIRE SIZE STAMPED  
ON INSULATION BARREL

SECTION B-B



SECTION C-C



SECTION A-A

① REELED FOR USE WITH STANDARD APPLICATORS.

② REELED FOR USE WITH HEAVY DUTY MINI-APPLICATORS.

③ PLATED WITH .000100 MIN SILVER PER QQ-S-365.

④ PLATED WITH .000015 MIN GOLD PER MIL-G-45204 IN THE LOCALIZED GOLD PLATE AREA, GOLD FLASH ON THE REMAINDER, OVER .000030 MIN NICKEL PER QQ-N-290.

⑤ PLATED WITH .000030 MIN GOLD PER MIL-G-45204 IN THE LOCALIZED GOLD PLATE AREA, GOLD FLASH ON THE REMAINDER, OVER .000030 MIN NICKEL PER QQ-N-290.

⑥ PLATED WITH .000050 MIN 93-7% TIN-LEAD ALLOY OVER .000030 MIN NICKEL PER QQ-N-290.

7. WIRE RANGE = 12-16 AWG.

8. INSULATION RANGE = .140-.165 DIA.

⑨ PLATED TIN (NO LEAD). 0.00050 MIN THK PER  
ASTM-B-595 OVER NICKEL .000030 MIN THK PER QQ-N-290.

UNLESS OTHERWISE SPECIFIED DIMENSIONS ARE IN INCHES. TOLERANCES ON: DECIMALS ±.010 ANGLES ±.010	CONTRACT NO DR <i>Rick Robinson</i> 9-25-85 CHK <i>Rick Robinson</i> 10-15-85 APPD <i>Rick Robinson</i> 10-15-85 MATERIAL SEE CALLOUT FINISH SEE DASH NO	AMP INCORPORATED Harrisburg, Pa. 17105 NAME FEMALE TYPE XII CONTACT ASSEMBLY, WITH ASSIST SPRING SIZE C FSCM NO 00779 DRAWING NO 66740 SCALE NTS SHEET
OTHER APPD	TERMINAL LATCH COLOR FINISH LOOSE PIECE PART NO STRIP PART NO	

CUSTOMER DRAWING