

Distributed by:

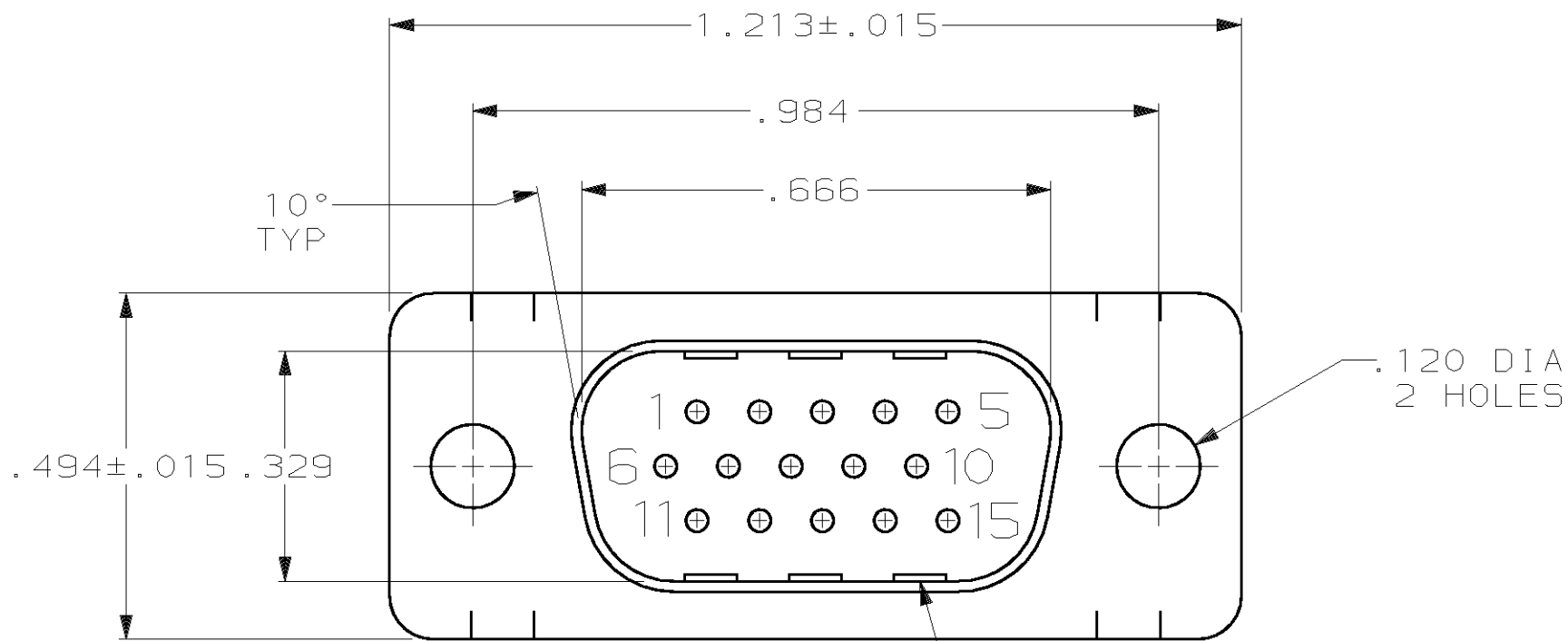
**JAMECO**<sup>®</sup>  
ELECTRONICS

**[www.Jameco.com](http://www.Jameco.com) ♦ 1-800-831-4242**

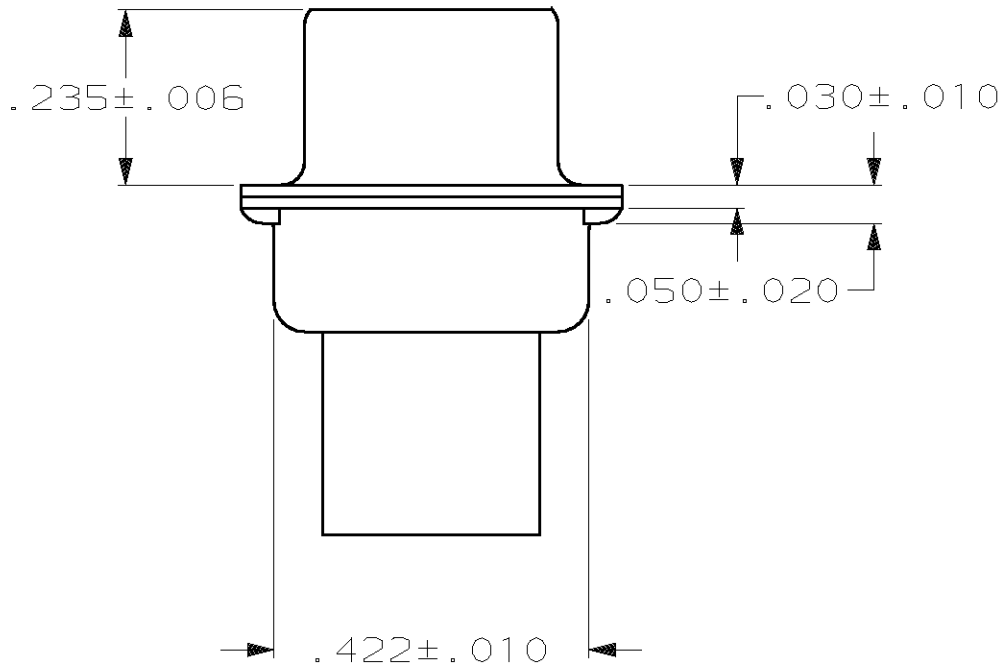
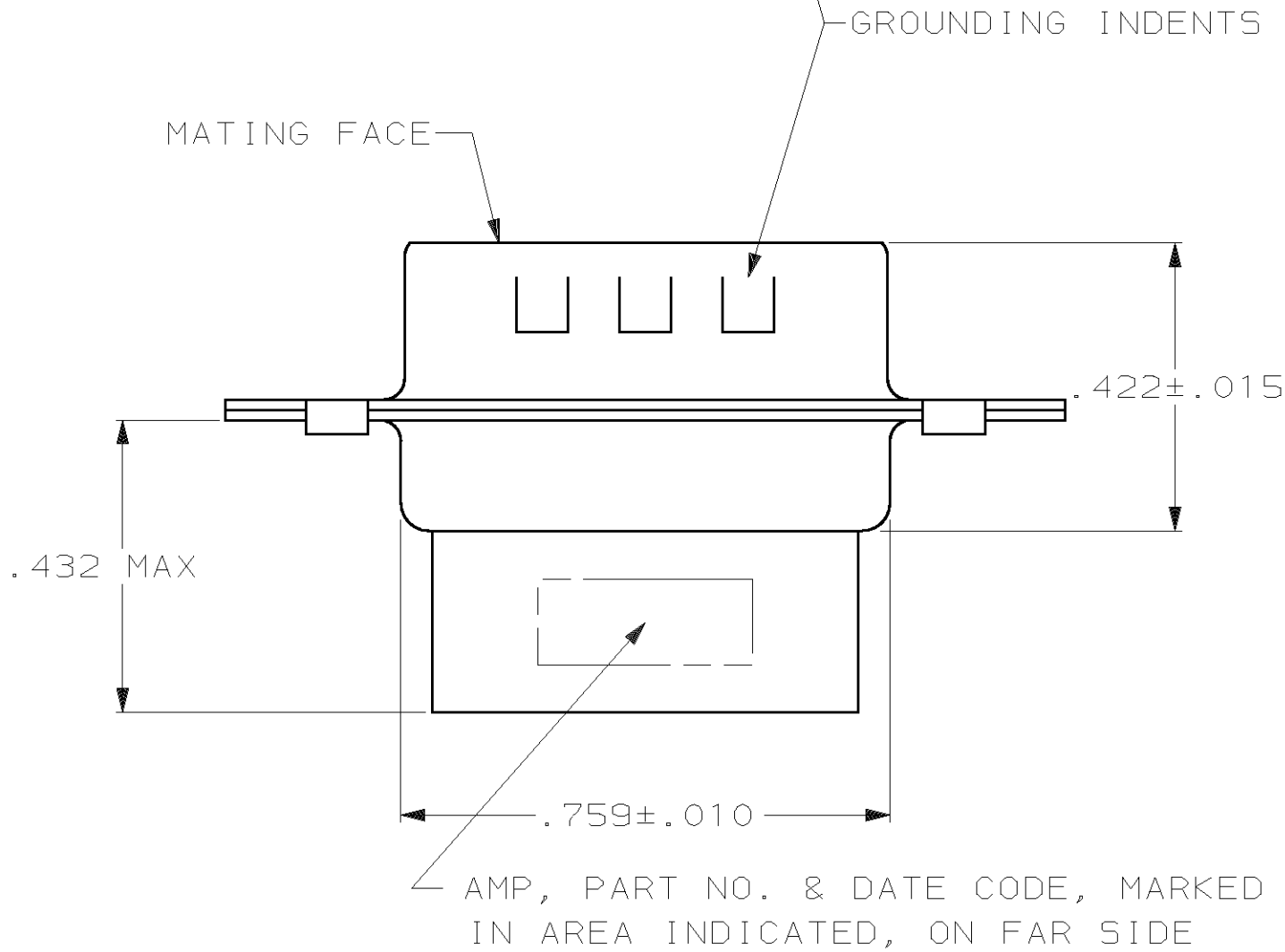
The content and copyrights of the attached  
material are the property of its owner.

Jameco Part Number 614660

LOC	DIST	P	F	REVISIONS				
				ZONE	LTR	DESCRIPTION	DATE	APPD
BD	48				F	REV PER EC 001D-0226-00	09/13/01	JR



- CONNECTOR ACCEPTS SIZE 22 DF PIN CONTACTS, RETENTION TINES ARE AN INTEGRAL PART OF INSERT.
- NYLON, FLAME RETARDANT, 94V-0 RATED, GLASS FILLED, BLACK.
- STEEL PER ASTM A109.
- TIN OR TIN-LEAD PLATED PER MIL-T-10727.
- TIN PLATED PER MIL-T-10727 OVER COPPER PER MIL-C-14550.
- 748364-5 IS FOR AMP THAILAND. PART HAS CIRCUIT HOLE #9 BLOCKED.



SUPERSEDED BY 748364-1	STANDARD	△5	YES	△6 748364-5
SUPERSEDED BY 748364-1	SMALL PACK	△5	YES	748364-4
OBSOLETE	STANDARD	△4	NO	748364-2
	STANDARD	△5	YES	748364-1
PACKAGING TYPE		SHELL FINISH	GROUNDING INDENTS	PART NO
DO NOT SCALE PRINT. UNLESS SPECIFIED DIMENSIONS IN INCHES TOLERANCES ON : 2 PLC DEC ± - 3 PLC DEC ± .005 ANGLES ± 2°		DR 12-3-86 C.RICHARD CHK 12-4-86 S.WELDON APPD 12-4-86 L.BREKOSKY APPD 12-5-86 V.KUMAR	AMP AMP Incorporated Harrisburg, PA 17105-3608	
MATERIAL MOLDED PARTS: △2 SHELLS: △3		PRODUCT SPEC -	NAME PLUG CONNECTOR, SIZE 1, 15 POSITION, AMPLIMITE™ HDP-22	
FINISH SHELLS: SEE TABLE		APPLICATION SPEC -	SIZE C	CAGE CODE 00779
		WEIGHT -	SCALE 4:1	DRAWING NO C-748364
			SHEET 1 OF 1	